

Estimation of Passenger Movements in the Summer Holidays 2019

As for the forecast of the international air passenger movements at Haneda International Passenger Terminal in this the Summer Holidays 2019, we would advise as follows;

1. Period

10 days from Friday, August 9 to Sunday, August 18 of 2019

2. Peaks

- Departure : Saturday, August 10
30,100 passengers estimated
- Arrival : Sunday, August 18
29,900 passengers estimated

3. Estimated Total Numbers of Passenger through the Period

Departure Passengers: 270,400

Arrival Passengers: 269,300

Total: 539,700 (vs. previous year 103.8%)

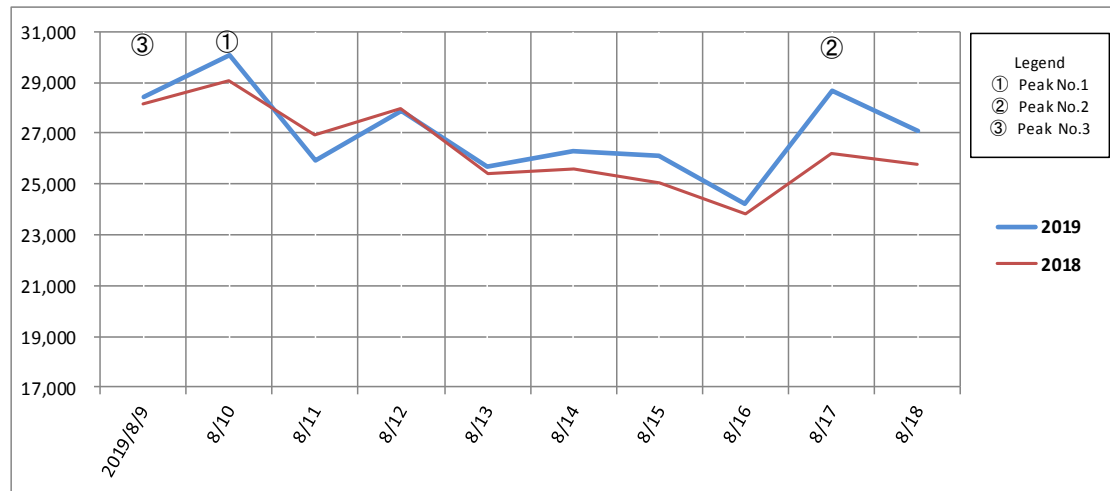
*Please find the attachment for further information.

*The estimation above is analyzed based on the data provided from the airlines by TIAT.

Estimation of Passenger Movements in "Summer Holidays" 2019

2019 Summer Holiday Number of Passenger (Estimation)				2018 Summer Holiday Number of Passenger (Past results)					
Category		Departures	Arrivals	Total	Category	Departures	Arrivals	Total	
2019/8/9	Fri	③ 28,400	25,600	54,000	2018/8/10	Fri	28,155	24,783	52,938
8/10	Sat	① 30,100	25,900	③ 56,000	8/11	Sat	29,071	24,970	54,041
8/11	Sun	25,900	23,800	49,700	8/12	Sun	26,907	23,790	50,697
8/12	Mon	27,900	25,200	53,100	8/13	Mon	27,958	23,497	51,455
8/13	Tue	25,700	25,700	51,400	8/14	Tue	25,388	24,070	49,458
8/14	Wed	26,300	③ 28,600	54,900	8/15	Wed	25,572	26,343	51,915
8/15	Thu	26,100	28,300	54,400	8/16	Thu	25,019	26,711	51,730
8/16	Fri	24,200	26,400	50,600	8/17	Fri	23,836	25,718	49,554
8/17	Sat	② 28,700	② 29,900	① 58,600	8/18	Sat	26,186	27,665	53,851
8/18	Sun	27,100	① 29,900	② 57,000	8/19	Sun	25,764	28,505	54,269
Total (vs. previous year)		270,400 (102.5%)	269,300 (105.2%)	539,700 (103.8%)	Total		263,856	256,052	519,908

(Departure Passenger)



(Arrival Passenger)

